

JOIN US!



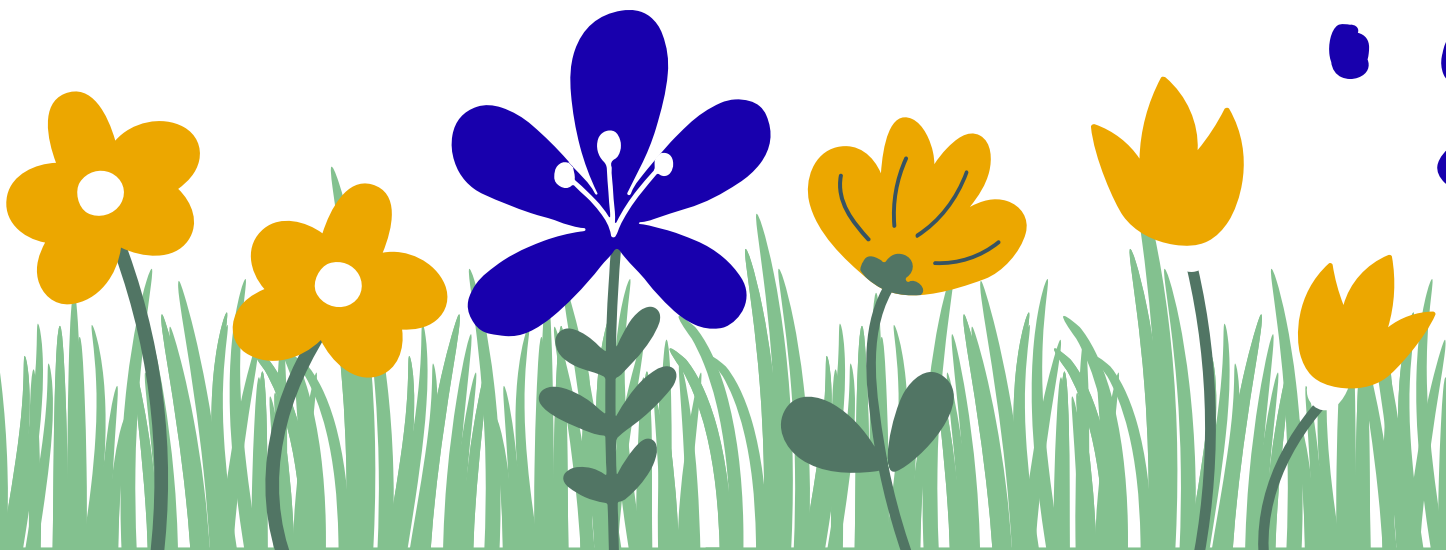
READING-FLEMING INTERMEDIATE SCHOOL

POLLINATOR GARDEN

RIBBON CUTTING CEREMONY

**APRIL 9
3:15 PM**

50 COURT STREET ~ FLEMINGTON, NJ 08822





RFIS Pollinator Garden

- Providing opportunities for students to learn outdoors through hands-on stewardship activities in the classroom and beyond the bell
- Building community awareness and appreciation for the native habitat by connecting experiences with the soil, plants, and pollinators with interactive Citizen Scientist campaigns

Pollinator Garden and Outdoor Classroom

Student volunteers:

- Planted **hundreds** of small plant plugs donated by the Xerces Society
- Installed bat houses, purchased exploration materials, removed dead trees, built bee motels, and planted milkweed as part of *NOAA Planet Stewards* grant
- Planted tree saplings from *J and J Landscaping* and *Bartlett Tree Service* and removed several yards of garbage and invasive plants from the garden and outdoor classroom and adjacent watershed
- Expanded Garden Club to address wintertime preparations needed to support the program

Uniqueness of program

- Accessibility- path created within the garden funded by *NJEA HIPP Foundation* makes the entire garden more accessible for all students
- Communication- signage notes the numerous plants, areas of interest, and ways to participate with the garden's many interactive features.
- Integrated technology- students encouraged to participate in *Citizen Scientist* and *NASA GLOBE* programs in school and at home
- Coming soon... Professional development funded by *PSEG* through *Sustainable Jersey*

Community involvement- local organizations and businesses have provided volunteers, advice, and funding to help us create a local network of resources and ensure sustainability of the project. Watch us grow!

Scout groups have volunteered dozens of hours to spread mulch, dig holes, and ready the garden for the ribbon cutting ceremony.

Did you know the benches in the outdoor classroom are made from recycled plastic caps and lids? That's right. With help from the community, students collected over 700 pounds of caps and lids which were then melted down and molded into our sturdy benches for the outdoor classroom and walking path. The NJEA HIPP Foundation, Foundation for Impact on Literacy and Learning, and a RFIS coin collection funded the bench project.

SPECIAL THANKS TO OUR SPONSORS



Watch Us Grow!



Want to learn more about how YOU can be a Citizen Scientist? Stop by the Student Council booth at upcoming District STEM nights or use the QR code to access the RFIS Pollinator Garden website.



We are very happy to announce that the RFIS Pollinator Garden is a certified wildlife habitat, registered Monarch Waystation, and a Homegrown National Park! In addition, RFIS is a River Friendly School thanks to the practice and efforts of its students and staff.

